

# DIBAL

## Retail Scales **K Series**



1	11	21	31
2	12	22	32
3	13	23	33
4	14	24	34
5	15	25	35
6	16	26	36
7	17	27	37
8	18	28	38
9	19	29	39
10	20	30	40

New Models **K+** Plus



**Receipt printer or "2 in 1" printer:  
receipts or labels in a single scale**

# K Series retail scales

## Capacity / Accuracy

### Single range options:

6 kg - 2 g / 15 kg - 5 g / 30 kg - 10 g.

### Dual range options:

3 kg - 1 g # 6 kg - 2 g / 6 kg - 2 g # 15 kg - 5 g / 15 kg - 5 g # 30 kg - 10 g.

### 6.000 divisions option:

12 kg - 2 g / 30 kg - 5 g.

## Display

**Backlight LCD** segments display, available in two versions: **numeric or alphanumeric display.**



## Features

**Articles:** Up to 5.000 PLUs, depending on model.

**Pre-sets:** 32 x 2 keys. Transparent keyboard overlay to personalise PLUs (except in stainless steel hanging scales).

**PLU related information:** code, pre-set, name, price, type of article (weighed / non weighed), section (10 sections), VAT (5 types) and tare. In models with label printer, each article also includes: label format (5 formats), 3 dates (current, use by, extra) and free texts (3 lines x 20 characters for texts and ingredients).

**Vendors:** 10 (5 x 2 keys), except in self-service scales.

**Pre-set tares:** 10.

**Beef traceability:** printing of animal info, on receipt and/or label, according to European regulation.

### Other features:

- Currency converter.
- Calculation of cash to be returned to customer.
- 5 Payment terms.
- Sales reports (by PLU, vendor, section, etc).

## Formats

**FLAT**, with receipt printer or receipt/label printer.

**TOWER**, with receipt printer or receipt/label printer.

**DOUBLE BODY**, with receipt printer or receipt/label printer.



## Configurable self-service keyboard

Dibal RMS Windows program allows to design your own self-service keyboard.

### Shape, size and number of keys:

You can programme configurations from 1 up to 100 keys. The scale can store up to 12 different keyboard configurations (to be selected by the user).

### Design of the keyboard layout:

With texts and pictures of the products and possibility to export the graphic file or send it directly to the printer.



## Connectivity and communications

### Scales network:

- Up to 5 scales, in K-240+, K-250+, K-240 B+ and K-255 models.

### Computer communication:

- Available in all models, except in K-240+ and K-230/240 B+.
- Local (RS-232, RS-232/422, depending on model) or via modem by means of the optional Dibal RMS software.
- Option: Ethernet 10BaseT or wireless communication based on IEEE 802.11b, in K-265+ and K-280/282+ models.

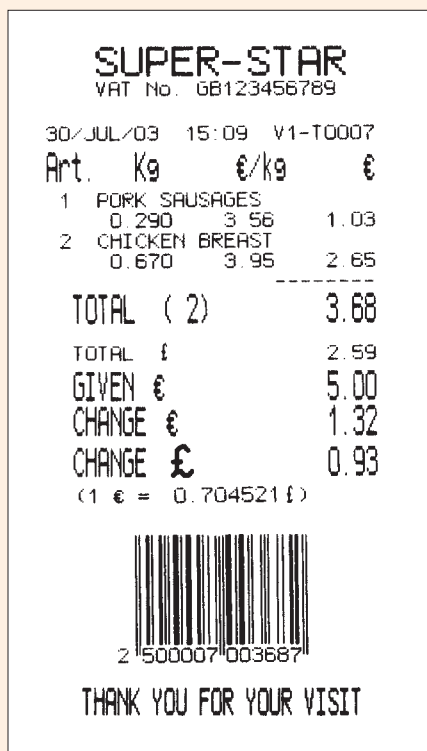


### Other connections:

- Connection to cash drawer (24 V), included in all versions, except in self-service and hanging models.
- Integration with Waldyssa-Automac "Elixa Micro" wrapping machine.
- Optional connection to external battery (12 V).

**All K Series models can be connected to computer to load data and configurations, and for back-up copies.**





€/£ simulated exchange.



## Printing functions

**Two types of thermal printers:**

**Receipt printer** (K-230+, K-240+, K-250+, K-230 B+ and K-240 B+ models) that allows the use of standard or high capacity paper rolls.

**Multi purpose printer: allows the use of receipt and label rolls or continuous adhesive paper** in K-235+, K-265+, K-255 (K-280/282+: only labels).

- Standard or high capacity rolls can be used in flat and tower scales; there is also an optional accessory to allow the use of small sized labels.  
- Double body, ABS hanging and self-service scales, are equipped with a **cassette** for quick paper replacement. An optional accessory is available to allow the use of standard paper rolls and small sized labels.

**Receipt configuration:**

- **8** programmable **text lines** (4 head lines, 2 under the total and 2 bottom lines).
- Date, time and receipt number.
- **EAN-13** bar code.
- Total in local currency and/or Euro.
- Amount received and cash returned.
- Possibility to print "**cash voucher**".
- **4 font types**.
- **Beef traceability**.

**Label configuration:**

- Up to **4.000 ingredients** (editable).
- **5** configurable **label formats**.
- **40 fields** per format.
- **15 programmable text lines\***.
- **EAN-13** bar codes.
- **3 dates:** current, use by and extra.
- **3 free text** per each PLU.
- **Beef traceability**.
- "Copy format" function.
- **4 font types** x 15 sizes.
- Rotation of texts and bar codes.

\* K-255 model: 8 lines.

**HANGING ABS,**  
with receipt printer or  
receipt/label printer.



**HANGING  
STAINLESS STEEL**  
with receipt printer.



**SELF-SERVICE,**  
with label printer.



# K Series retail scales

## Power

**Mains supply:** 110 or 230 VAC (depending on versions).

### Rechargeable internal battery:

Optional in all models, except in hanging and self-service formats; battery range depends on use: receipt/label, networking, backlight,...

### Long range internal rechargeable battery, in K-230 B+ / K-240 B+ models:

- Up to 2.000 receipts in flat or tower formats (with backlight off).
- Up to 8.000 receipts in double body format, equipped with two batteries (with backlight off).

K-230 B+ and K-240 B+ models offer a range of about 5 times longer than the rest of models.

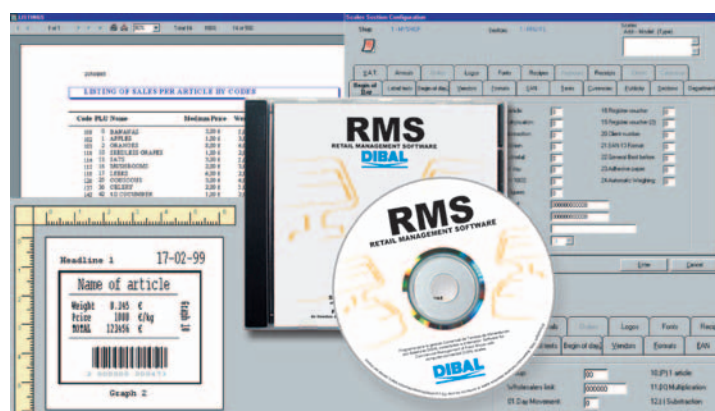
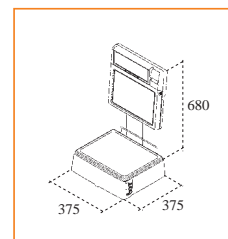
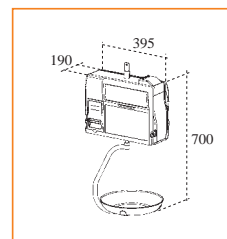
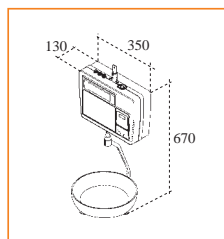
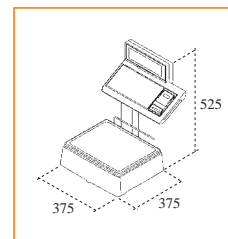
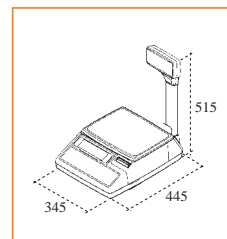
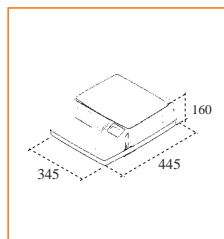
Load and range of rechargeable batteries can vary substantially depending on temperature, oldness and general estate, frequency of printing, networking, etc.

## Configuration and management software

### DIBAL RMS software on Windows

- **Complete scale management and management of one or more shops:** scales programming, operation listings, price changes, vendors management, articles, ingredients, offers, stock control in the main warehouse and in shops, purchase orders,...
- **Design of labels with visual interface.**
- **Local or remote automatic communications.**
- **Module (Dibal "LBS") to load data and configurations, and for back-up copies.**

## Dimensions (mm)



## Table of models

Models	Available Formats <sup>(1)</sup>						Printer Type	Articles (PLUs)	Scales Networking	Computer connection	
	F	T	DB	HA	HS	SS				RS-232/422	Ethernet
K-230+	•	•	•	•	•		Receipt	2.000	NO	RS-232	
K-240+	•	•	•	•	•		Receipt	2.000	YES	NO	
K-250+	•	•	•	•	•		Receipt	5.000	YES	RS-232/422	
K-230 B+	•	•	•				Receipt	1.000	NO	NO	
K-240 B+	•	•	•				Receipt	1.000	YES	NO	
K-235+	•	•	•	•			Label/Receipt	2.000 <sup>(4)</sup>	NO	RS-232	
K-265+	•	•	•	•			Label/Receipt	2.000 <sup>(4)</sup>	NO	RS-232/422 <sup>(2)</sup>	OPTIONAL
K-255	•	•	•	•			Label/Receipt	1.000	YES	RS-232/422	
K-280+ / K-282+ <sup>(3)</sup>						•	Label	1.900 <sup>(4)</sup>	NO	RS-232/422 <sup>(2)</sup>	OPTIONAL

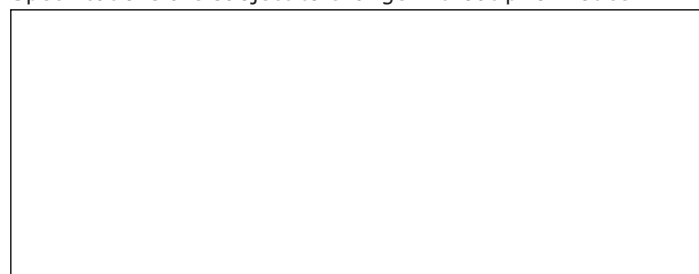
(1) Formats: F= Flat, T= Tower, DB= Double Body, HA= Hanging ABS, HS= Hanging Stainless Steel, SS= Self-Service.

(2) RS-422 requires external adapter.

(3) K-280+ : 1 display, K-282+ : 2 displays (buyer's and vendor's)

(4) Also available firmware versions for telecharge with 400 or 4.500 PLUs (350 or 3.700 in self-service models), depending on the charge of information in each PLU.

Specifications are subject to change without prior notice.



DIBAL, S.A. - Astintze, 24 (P. I. Neinver) 48160 Derio (Vizcaya) - Spain

Tel.: (+34) 94 452 15 10 - Fax: (+34) 94 452 36 58

http://www.dibal.com - E-mail: dibal@dibal.com